

XT32/16

32/16-Channel Mid-Range Lidar

- Minimum Range of Zero
- High Precision
- Cost-Efficient



XT32/16 Key Specifications

Instrument Range 0.05 to 120 m	Range Capability 80 m @10% reflectivity (Channels 9 to 24)
Range Accuracy ±1 cm (typical)	Range Precision 0.5 cm (1σ, typical)
Vertical FOV XT16: 30° (-16° to 15°) XT32: 31° (-16° to 15°)	Vertical Resolution XT16: 2° XT32: 1°
Frame Rate 5 Hz, 10 Hz, 20 Hz	Horizontal Resolution 0.09° (5 Hz)/0.18° (10 Hz) 0.36° (20 Hz)
Ingress Protection IP6K7	Operating Temperature -20°C to 65°C
Weight 0.8 kg	Dimensions Height: 76.00 mm Top/Bottom: Φ100.0/103.0 mm
Power Consumption XT16: 9 W (typical) XT32: 10 W (typical)	Operating Voltage DC 9 to 36 V
Clock Source GPS/PTP	Data Points Generated XT16: Single Return: 320,000 pts/sec Dual Return: 640,000 pts/sec XT32: Single Return: 640,000 pts/sec Dual Return: 1,280,000 pts/sec

XT32/16 Applications



Unmanned
Logistics



UAV



Factory AGVs



XT32/16

Product Superiority



Outstanding Precision

Superior to comparable products on the market.



Minimum Range of Zero

XT series continuously outputs valid point cloud even when objects directly touch the lidar's cover lens. This enables the self-detection of lens smear and occlusion.



Strong Range Capability

Range detection up to 120 m, POD>90% when detecting 10% reflectivity targets at 80 m (middle 16 channels).



High-Quality Reflectivity Information

High accuracy and consistency, greater dynamic range, and provides more accurate reflectivity information.



Reliability

Have passed strict reliability tests including High-temperature operation, Low-temperature wakeup+operation, Thermal Shock/Air-to-Air, Vibration with Thermal Cycling, Mechanical Shock, Humid Heat Cyclic, Frost, Water and Dust Proof, and Shipping Vibration. Robust and reliable in various operation environments.

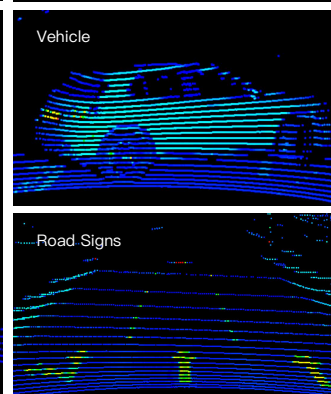
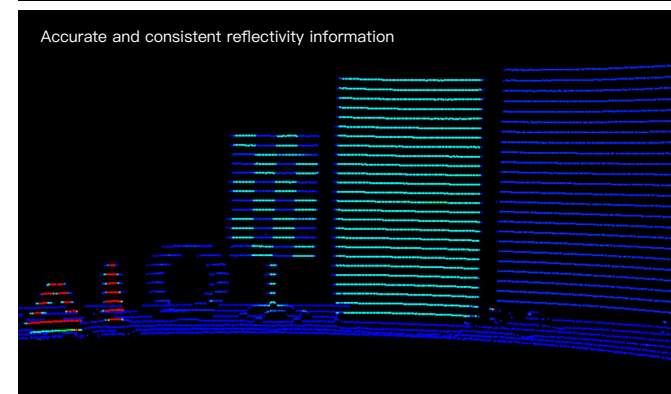
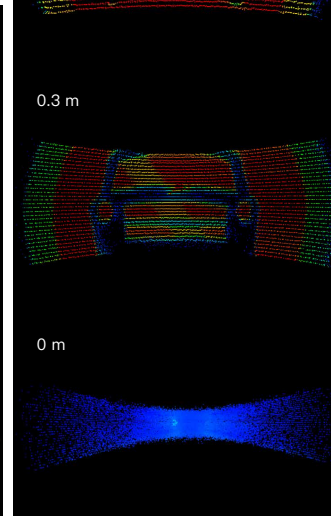
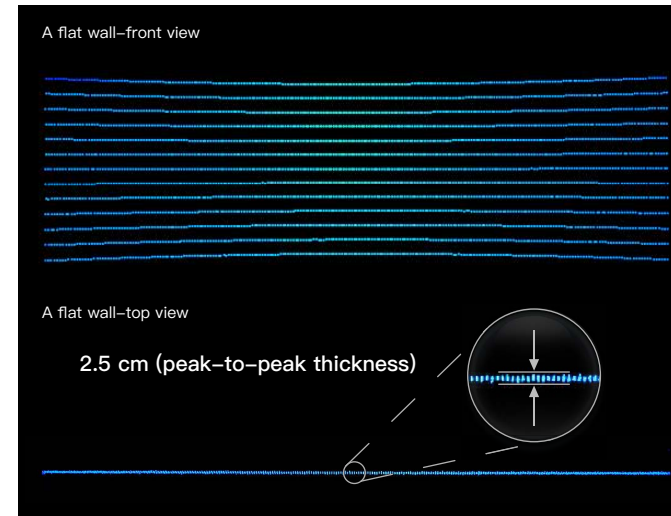
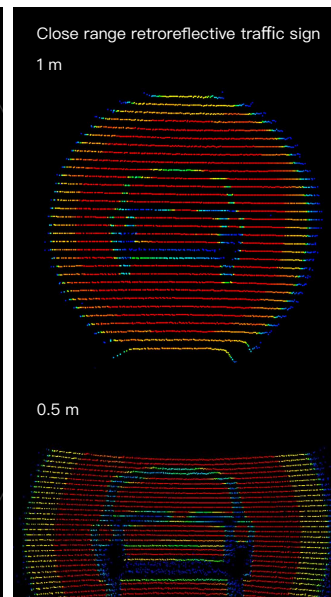
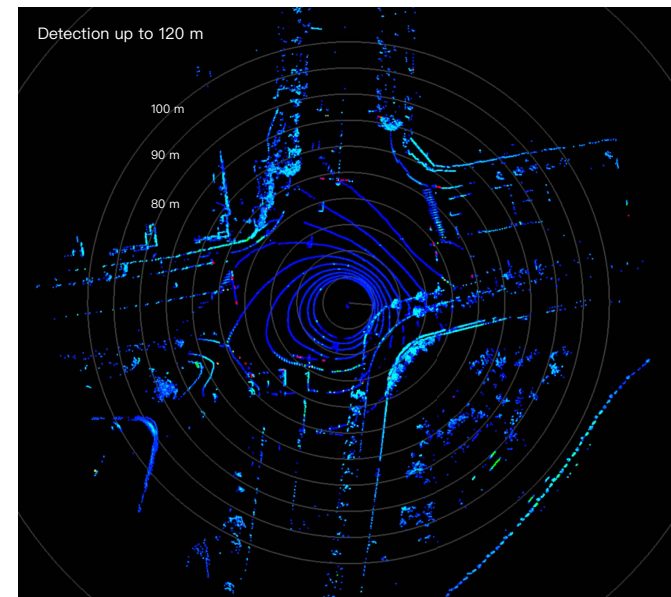


Interference Rejection

Every pulse has its own 'fingerprint', rejecting noise when multiple lidars operate closely together.

XT32

Point Cloud



Hesai Technology Co., Ltd.

Phone: 400-805-1233

Sales: sales@hesaitech.com

Website: www.hesaitech.com

Address: Building L2, Hongqiao World Centre, Shanghai



Website QR Code



WeChat QR Code

XT32/16

Product Superiority



Outstanding Precision

Superior to comparable products on the market.



Minimum Range of Zero

XT series continuously outputs valid point cloud even when objects directly touch the lidar's cover lens. This enables the self-detection of lens smear and occlusion.



Strong Range Capability

Range detection up to 120 m, POD>90% when detecting 10% reflectivity targets at 80 m (middle 16 channels).



High-Quality Reflectivity Information

High accuracy and consistency, greater dynamic range, and provides more accurate reflectivity information.



Reliability

Have passed strict reliability tests including High-temperature operation, Low-temperature wakeup+operation, Thermal Shock/Air-to-Air, Vibration with Thermal Cycling, Mechanical Shock, Humid Heat Cyclic, Frost, Water and Dust Proof, and Shipping Vibration. Robust and reliable in various operation environments.



Interference Rejection

Every pulse has its own 'fingerprint', rejecting noise when multiple lidars operate closely together.

XT32

Point Cloud

